

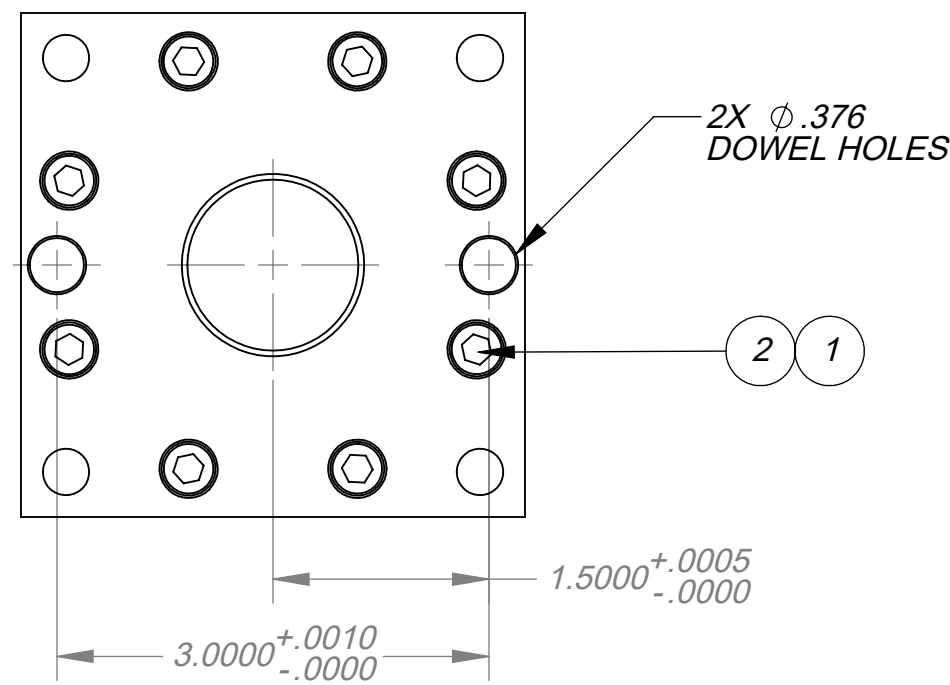
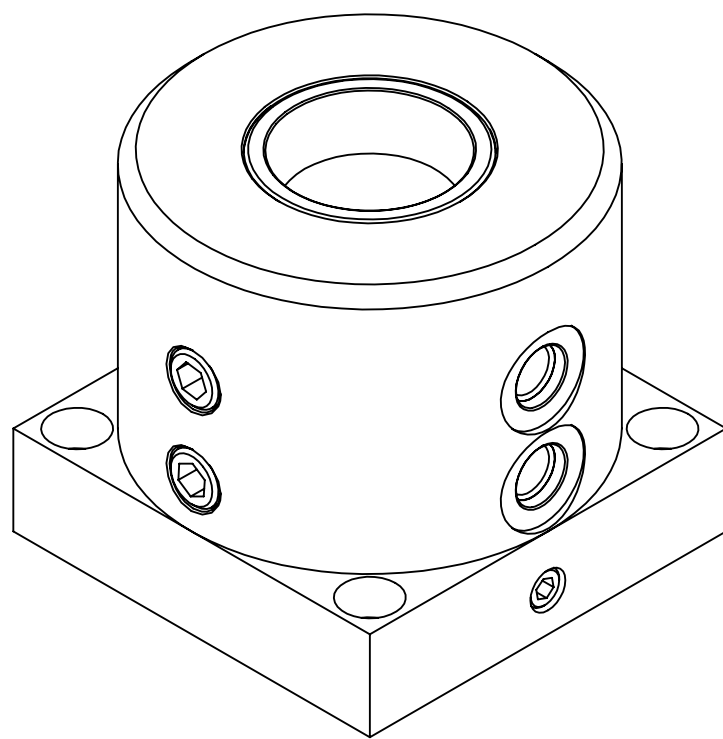
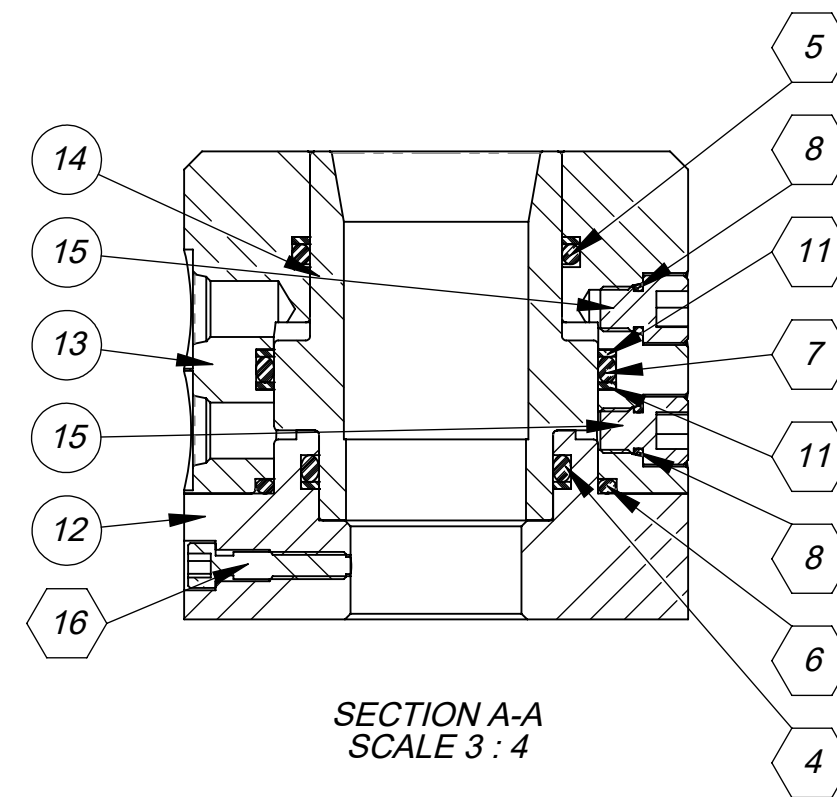
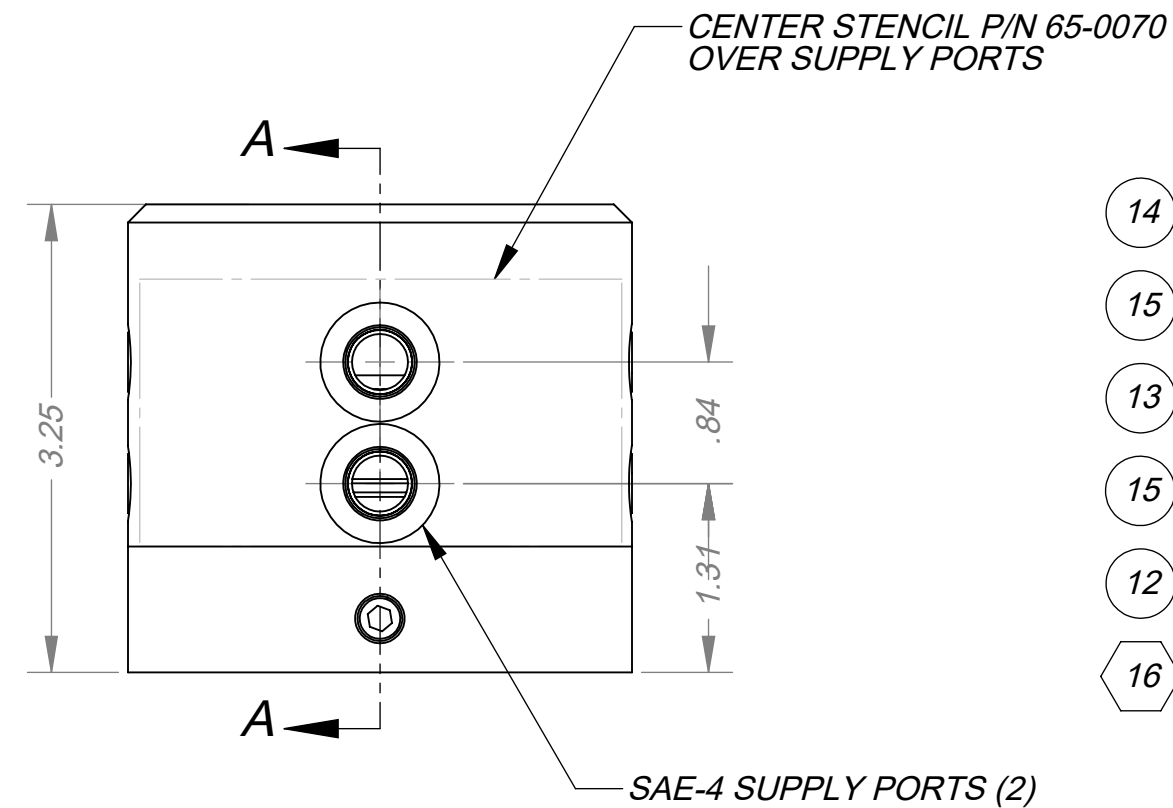
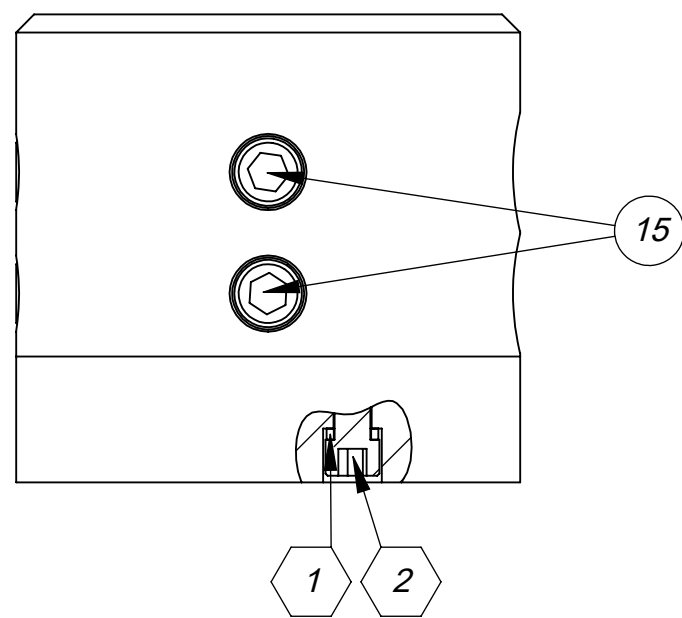
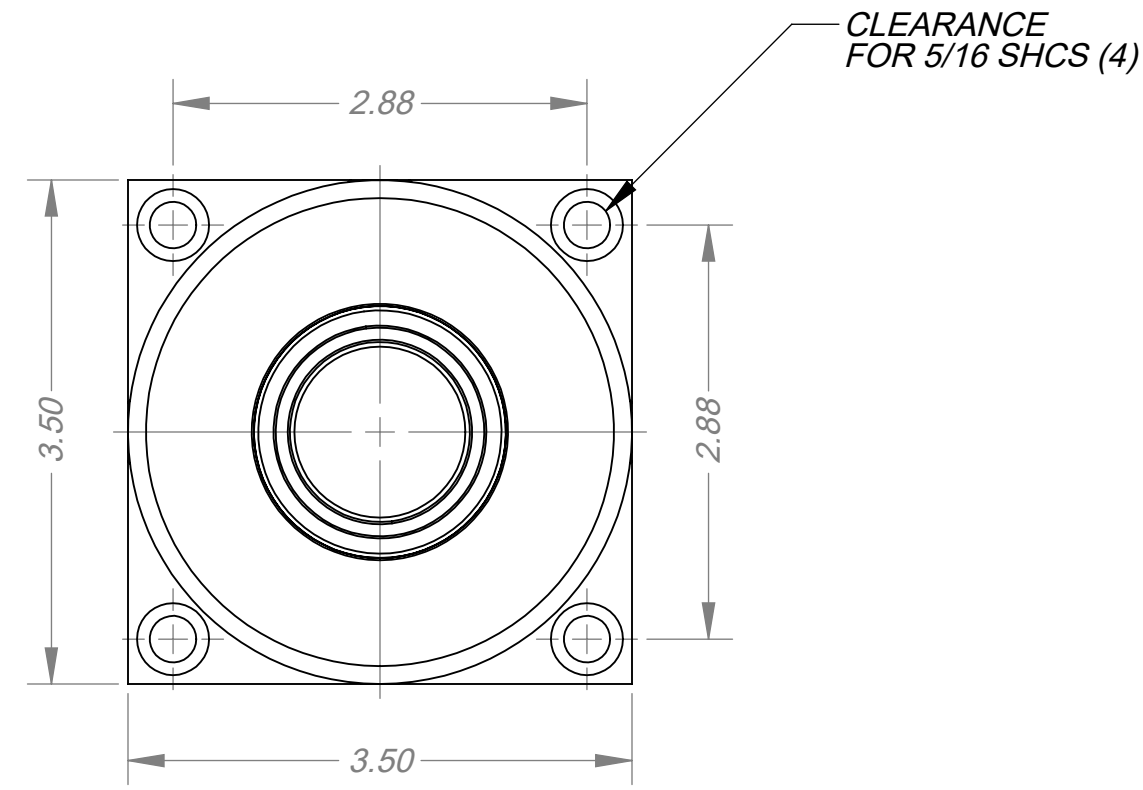
THIS DOCUMENT AND ITS CONTENTS ARE THE PROPERTY OF LEXAIR, INC. THEY ARE FURNISHED TO YOU ON THE FOLLOWING CONDITIONS: NO RIGHT OR LICENSE IN RESPECT OF THIS DOCUMENT OR ITS CONTENTS IS GIVEN OR WAIVED IN SUPPLYING THE DOCUMENT TO YOU. THIS DOCUMENT OR ITS CONTENTS ARE NOT TO BE USED OR TREATED IN ANY MANNER INCONSISTENT WITH THE RIGHTS OF LEXAIR, INC. OR TO ITS DETRIMENT AND ARE NOT TO BE COPIED, REPRODUCED, OR DISCLOSED OF, EXCEPT WITH ITS PRIOR WRITTEN CONSENT.

ITEM NO.	PART NUMBER	DESCRIPTION	QTY.
1	01-0501	WASHER, LOCK, 1/4, HI COLLAR, ZINC	8
2	01-0748	SCREW, SHC, 1/4-20 X 2.25, ZN	8
3	01-2302	PIN, DOWEL, 1/8 X 1/2, ALLOY	1
4	04-01-223	O-RING, BUNA, -223	1
5	04-01-224	O-RING, BUNA, -224	1
6	04-01-226	O-RING, BUNA, -226	1
7	04-01-228	O-RING, BUNA, 228	1
8	04-01-902	O-RING, BUNA, 902	6
9	04-31-223	BACK-UP RING, PARBAK #223	1
10	04-31-224	BACK-UP RING, PARBAK #224	1
11	04-31-228	RING, O-RING BACKUP	2
12	65-0056	BASE, 5C COLLET CLOSER	1
13	65-0057	BODY, 5C COLLET CLOSER	1
14	65-0058	PISTON, 5C COLLET CLOSER	1
15	65-0065	PLUP, PRESSURE, CC	6
16	65-0066	LOCK PIN, 5C, COL. CLOSER	1

**C65301**

**REVISIONS**

- A** UPDATED EXPLODED VIEW TO MAKE MORE CLEAR ECL- 15058
- B** REMOVED 5000 PSI FROM DESCRIPTION ECL- 17024



- NOTES:**
- MAX. PRESSURE 1500 PSI.
  - APPROXIMATE RADIAL GRIP FORCE = 5.14 X PRESSURE.
  - ITEMS IN HEX BALLOONS ARE INCLUDED IN THE STD. REPAIR KIT 65-0000

Tolerances Unless Otherwise Specified:	MATERIAL SPEC.	
	FINISHED	AS CAST
DEC .00	± .015	± .030
DEC .000	± .005	± .010
FRACTIONAL	± 1/64	± 1/32
ANGLES	± 1/2°	± 1°

MATERIAL SPEC.  
PROCESS SPEC.

ECL: 99147 06-23-99 MBR

PC. NO. 65301

MADE FROM SEE B.O.M.

**COLLET CLOSER, 5C ASSEMBLY**

**C 65301**



DRAWN	CHECKED	APRVD.
MBR	TPO	TPO
06-04-99	06-04-99	06-04-99

CAD FILE 65301.drw

SHEET NO. 1 of 1

SCALE 1:1.5 SHEETS

APPROX. WT. 7.263 LBS